

schema : 201405  
table : 05\_dat\_sample  
x : 架空の値 1 ( column1 )  
y : 架空の値 5 ( column5 )  
alpha : 0.05

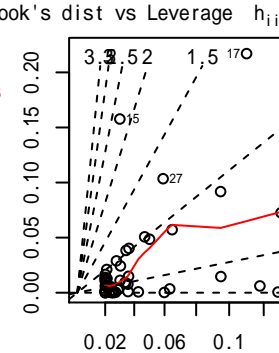
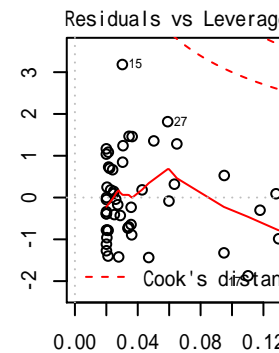
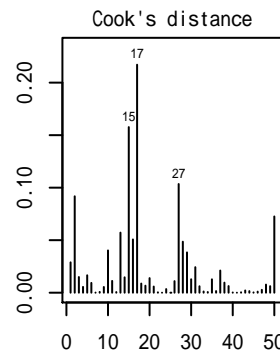
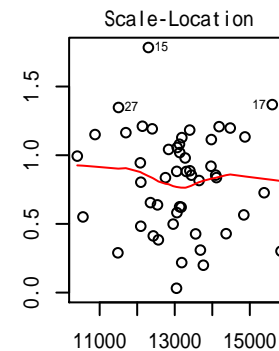
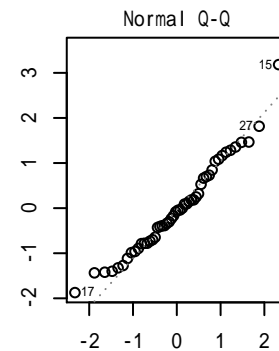
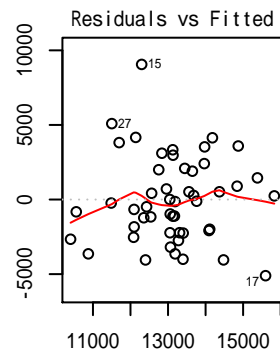
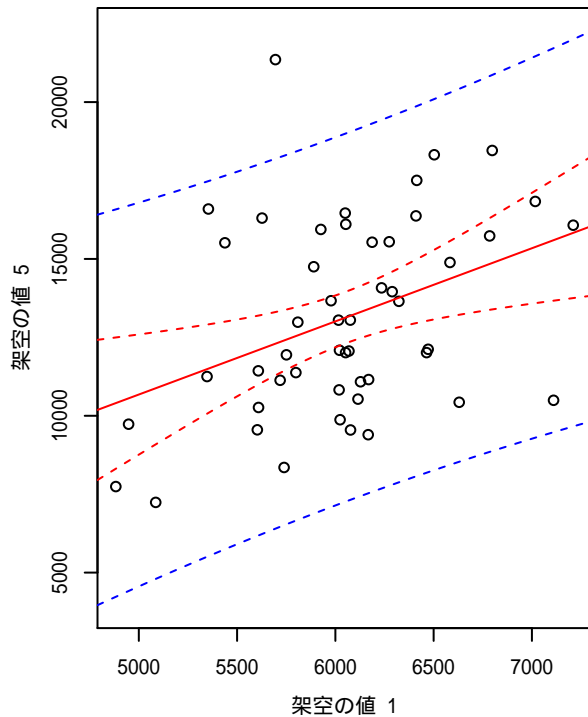
Call:  
lm(formula = y ~ x)

Residuals:  
Min 1Q Median 3Q Max  
-5103.6 -2186.8 -185.5 1974.8 9057.5

Coefficients:  
Estimate Std. Error t value Pr(>|t|)  
(Intercept) -984.4426 4974.8798 -0.198 0.84397  
x 2.3322 0.8194 2.846 0.00649

Residual standard error: 2890 on 48 degrees of freedom  
Multiple R-squared: 0.1444, Adjusted R-squared: 0.1266  
F-statistic: 8.101 on 1 and 48 DF, p-value: 0.006488

(formula) y = 2.332 \* x - 984.443



schema : 201405  
table : 05\_dat\_sample  
x : 架空の値 2 ( column2 )  
y : 架空の値 5 ( column5 )  
alpha : 0.05

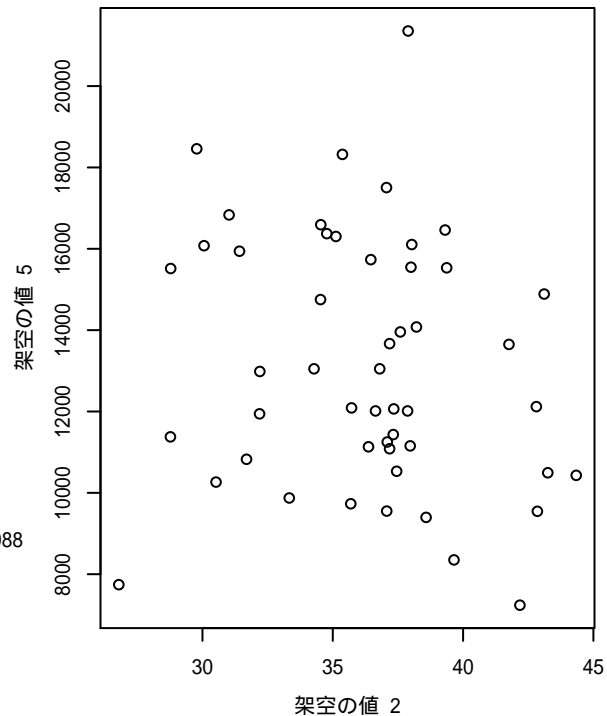
Call:  
lm(formula = y ~ x)

Residuals:  
Min 1Q Median 3Q Max  
-6567.4 -1969.5 -488.4 2626.5 8429.9

Coefficients:  
Estimate Std. Error t value Pr(>|t|)  
(Intercept) 17653.8 3927.1 4.495 4.39e-05  
x -124.8 107.6 -1.160 0.252

Residual standard error: 3081 on 48 degrees of freedom  
Multiple R-squared: 0.02725, Adjusted R-squared: 0.006988  
F-statistic: 1.345 on 1 and 48 DF, p-value: 0.2519

(formula)  $y = -124.8 * x + 17653.8$



schema : 201405  
table : 05\_dat\_sample  
x : 架空の値 3 ( column3 )  
y : 架空の値 5 ( column5 )  
alpha : 0.05

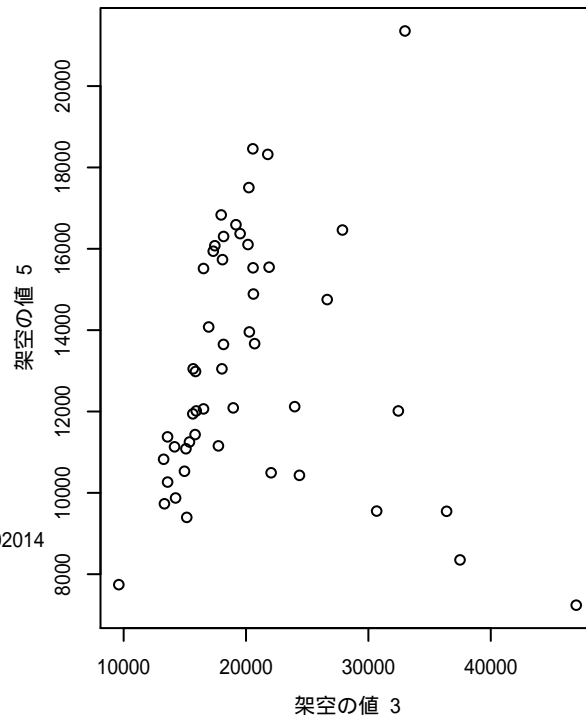
Call:  
lm(formula = y ~ x)

Residuals:  
Min 1Q Median 3Q Max  
-5587 -2310 -579 2546 8371

Coefficients:  
Estimate Std. Error t value Pr(>|t|)  
(Intercept) 1.336e+04 1.339e+03 9.976 2.74e-13  
x -1.128e-02 6.253e-02 -0.180 0.858

Residual standard error: 3123 on 48 degrees of freedom  
Multiple R-squared: 0.0006776, Adjusted R-squared: -0.02014  
F-statistic: 0.03255 on 1 and 48 DF, p-value: 0.8576

(formula)  $y = -1.128e-02 * x + 1.336e+04$



schema : 201405  
table : 05\_dat\_sample  
x : 架空の値 4 ( column4 )  
y : 架空の値 5 ( column5 )  
alpha : 0.05

Call:  
lm(formula = y ~ x)

Residuals:  
Min 1Q Median 3Q Max  
-7456.6 -1634.8 275.6 1975.4 6085.2

Coefficients:  
Estimate Std. Error t value Pr(>|t|)  
(Intercept) 15484.52 783.03 19.775 < 2e-16  
x -94.59 27.14 -3.485 0.00106

Residual standard error: 2791 on 48 degrees of freedom  
Multiple R-squared: 0.2019, Adjusted R-squared: 0.1853  
F-statistic: 12.14 on 1 and 48 DF, p-value: 0.001062

(formula)  $y = -94.59 * x + 15484.52$

